

Historic, Archive Document

Do not assume content reflects current scientific knowledge, policies, or practices.



T. W. WOOD & SONS, Seedsmen

RICHMOND, VIRGINIA

Catalog of

NURSERY STOCK

FALL 1941 and SPRING 1942

LIBRARY
DEC 17 1941
U. S. Department of Agriculture

Beautify your home grounds with flowering shrubs and evergreens. They not only add to the attractiveness and comfortable appearance of the home at little cost, but increase its value.

Prices quoted are f. o. b. Richmond. No charge for packing. We ship only first-class stock, but there are so many conditions on which successful growth is dependant, and over which we have no control, that we cannot guarantee nursery stock to live.

NURSERY STOCK WILL BE SHIPPED BY EXPRESS OR FREIGHT SEPARATE FROM SEED ORDERS

HARDY EVERGREENS—(CANNOT BE MAILED)



Globe Arborvitae

GLOBE ARBOVITAE—Almost a perfect globe; the foliage is light green and very attractive; usually grown as single plants. 12 to 15 inches, \$1.00 each; 15 to 18 inches, \$1.50 each.

PYRAMIDAL ARBOVITAE (Columnar Type)—This beautiful Arborvitae is the most compact and erect of the entire species, being in form almost a counterpart of the Irish Juniper. 18 to 24 inches, \$1.00; 2 to 3 feet, \$1.75 each.

CHINESE ARBOVITAE—Biota Orientals. Bushy tree of pyramidal growth, fresh green foliage. One of the hardiest of all evergreens. They can be kept to any height and made very compact by occasional trimming. 18 to 24 inches, 75c. each; 2 to 3 feet, \$1.00 each.

CHINESE COMPACT ARBOVITAE—Thrives in almost any soil and holds its color through the winter. Dwarf, compact; bright green foliage. 12 to 18 inches, 75c. each; 18 to 24 inches, \$1.00; 2 to 3 feet, \$1.50.

COLORADO BLUE SPRUCE—Strikingly beautiful, even at a long distance; valuable for ornamental planting. 30 to 36 inches, \$4.50; 3 to 4 feet, \$6.00 each.

DEODORA CEDAR—Popular trees for lawns or for blending in clumps with dark-leaved evergreens. The foliage is silvery green, the branches drooping and very graceful. 18 to 24 inches, \$1.50 each.

BIOTA AUREA NANA—One of the best dwarf golden evergreens. The kind of evergreen to which most everyone takes a fancy. It is compact, symmetrical, and very conspicuous in winter. 12 to 15 inches, \$1.00.

STRICTA JUNIPER—A bushy variety with grayish green needles above the dark green foliage beneath. Almost globe shaped, but pointed; very compact. 12 to 18 inches, \$1.00; 18 to 24 inches, \$1.50 each; 24 to 30 inches, \$2.00 each; 30 to 36 ins., \$2.50 each.

PFITZER JUNIPER—A most adaptable, hardy evergreen. Broad, bushy habit; gray green foliage having a feathery appearance. 12 to 18 inches, \$1.50; 18 to 24 inches, \$2.00 each; 24 to 30 inches, \$2.50 each.

IRISH JUNIPER—Forms a very narrow pyramid of green; leaves bluish green. 2 to 3 feet, \$1.25; 3 to 4 feet, \$1.75; 4 to 5 feet, \$2.50 each.

RETINOSPORA SQUARROSA VEITCHII—Veitch's Silver Cypress—Pyramidal and dense in growth, with blue-green, feathery foliage. A beautiful evergreen and one good for grouping. 18 to 24 inches, \$1.25 each; 24 to 30 inches, \$1.75 each; 30 to 36 inches, \$2.25 each.

SAVIN JUNIPER—J. Sabina. A dark green form spreading outward and upward, rather slower in growth than Dupressa. 12 to 18 inches, \$1.00 each; 18 to 24 inches, \$1.50 each.

RETINOSPORA PLUMOSA AUREA—A form of the preceding variety with bright golden foliage. Very useful for color contrasts. 18 to 24 inches, \$1.25 each; 24 to 30 inches, \$1.75 each; 30 to 36 inches, \$2.25 each.



Juniper Stricta

BROAD LEAVED EVERGREENS—(CANNOT BE MAILED)

AZALEAS—

Christmas Cheer. Compact grower with small shiny leaves. Deepest crimson flowers are small but very attractive, and one of best variety. 10 to 12 inches, \$1.25 each; 12 to 15 inches, \$1.50 each.

Amoena. Evergreen. Conspicuous, purple-red flowers. April. Leaves turn a rich, bronze-green in winter. 6 to 8 inches, 75c. each; 10 to 12 inches, \$1.00 each; 12 to 15 inches, \$1.25 each.

Hinodegiri. Similar to the Amoena, with bright scarlet flowers; a profuse bloomer; foliage round in shape with glossy leaves. 8 to 10 inches, \$1.00 each; 10 to 12 inches, \$1.25 each; 12 to 15 inches, \$1.50 each.



Azalea Ledifolia

Indica Rosea (Magnificia)—Fast grower with large size hairy leaves. Large single white flowers are tinted with rose. 10 to 12 inches, \$1.00 each; 12 to 15 inches, \$1.25 each; 15 to 18 inches, \$1.50 each.

Lilacina—A strong growing variety, producing single rosy lilac flowers with dull green leaves. 10 to 12 inches, \$1.00; 12 to 15 inches, \$1.25 each; 15 to 18 inches, \$1.50 each.

BUSH BOXWOOD—Popular for edging walks and driveways. It has small dark green glossy leaves. Thrives anywhere, in sun or shade, grows well in window and porch boxes, and may be trimmed to any shape. 10 to 12 inches, 75c. each; 12 to 15 inches, \$1.00 each; 15 to 18 inches, \$1.50 each; 18 to 21 inches, \$2.00 each; 21 to 24 inches, \$2.75 each; 24 to 27 inches, \$3.50 each.

DWARF BOXWOOD—The real old-fashioned kind; a slow growing but very attractive variety that always remains dwarf. The foliage is small, deep green and very dense. 2-year rooted plants, 3 to 4 inches, 75c. doz.; \$5.00 per 100. Field grown, 3 to 4 inches, \$1.25 per doz., \$8.00 per 100; 4 to 6 inches, \$1.75 doz.; \$12.55 per 100.

SOUTHERN MAGNOLIA—Magnolia Grandiflora. Large pyramidal tree, very large glossy green foliage; large white, fragrant flowers in the summer; adapted to most soils and situations. 2 to 3 feet, \$1.75; 3 to 4 feet, \$2.50 each.

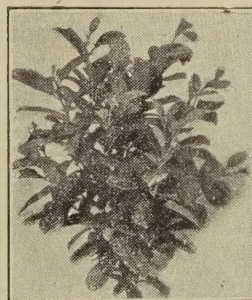


Bush Boxwood

ABELIA GRANDIFLORA—A graceful shrub with dark shining dart-shaped leaves that turn to a metallic green in winter. From June till frost it bears in clusters an abundance of dainty white tubular flowers about one inch long that are flushed with pink. Grown as a single specimen, in groups or with other shrubs it is most satisfactory. Plant in a sunny location, sometimes called Arbutus Shrub. 12 to 18 inches, 35c. each; \$3.50 dozen; 18 to 24 inches, 50c. each, \$5.00 dozen; 2 to 3 feet, 75c. each; \$7.50 dozen.

NANDINA DOMESTICA—A leafy Japanese evergreen that will thrive in any soil if the drainage is good. It resembles a dwarf bamboo; the foliage is pink tipped in summer, bronzy red in winter. The white flowers are followed by red berries in winter. The plant is dwarf and dense, being one of the dwarfish plants of Japanese gardens; graceful light green foliage. 1 to 1½ feet, 60c.; 1½ to 2 feet, \$1.00; 2 to 2½ feet \$1.50 each; 2½ to 3 feet, \$2.00.

ENGLISH LAUREL—Very beautiful with its broad, shining dark green foliage; a vigorous grower and thrives in any good garden soil. Attains a height of 12 to 15 feet, with a corresponding breadth. 1½ to 2 feet, \$1.00 each; 2 to 3 feet, \$1.50 each.



English Laurel

PYRACANTHA—

Lelandi—Evergreen burning bush. Covered with flowers in spring followed by bright orange berries that remain all winter. 18 to 24 inches, 75c.; 2 to 3 feet, \$1.00; 3 to 4 feet, \$1.50 each; 4 to 4 feet, \$2.00 each.

ELEAGNUS FUNGENS—A beautiful shrub with leaves two to four inches long, very dark green above, silvery beneath; creamy white fragrant flowers produced in late fall. 18 to 24 inches, 75c.; 2 to 3 feet, \$1.25 each.

LIGUSTRUM LUCIDUM (Japanese Evergreen Privet)—Of spreading but compact growth and can be trimmed to any shape desired. The leaves are large, dark green and glossy. In May it produces large heads of white flowers, which are followed by black berries that remain throughout the winter. 1 to 1½ feet, 75c. each; 1½ to 2 feet, \$1.00 each; 2 to 3 feet, \$1.50 each.

JAPANESE HOLLY (Ilex Crenata)—Dense growing evergreen. 12 to 15 inches, \$1.00 each; 15 to 18 inches, \$1.50 each; 18 to 24 inches, \$2.00 each.

HYPERICUM CALYGINUM—A low growing evergreen shrub which makes a beautiful ground cover. 1 year old plants, 25c. each, \$2.50 doz.; 2 year old plants, 35c. each, \$3.50 per doz.

FLOWERING SHRUBS

ALWAYS INCREASE THE VALUE AND BEAUTY OF YOUR HOME

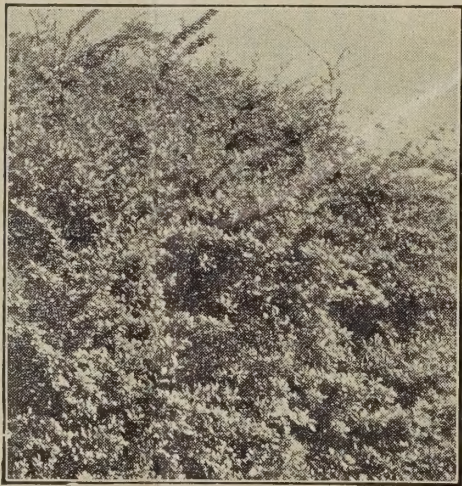
If To Be Sent By Mail Add 15c. Each to Cover Postage

ALTHEA (Rose of Sharon)—Blossoms abundantly from July to September when blooms are scarce. The shrub is tall and upright and splendidly adapted for screens, hedges and shrub borders. We can supply red, pink, purple and white. 2 to 3 feet, 30c. each; \$3.00 dozen; 3 to 4 feet, 40c. each; \$4.00 dozen.

FLOWERING ALMOND—Spring flowering shrubs, gaily in full bloom before the leaves appear. Their growth is dwarf, bushy and compact; slender branched; when in bloom completely hidden by beautiful, double flowers of rose, snuggling tight to the twigs. **Double Pink**—18 to 24 inches, 50c.

NEW RED-LEAVED BARBERRY (Berbert's Thunbergii Atropurpurea). Atropurpurea is an exact reproduction of Thunbergii in every way—habit, leaf formation and fruiting; but, whereas the original is a deep green from spring until fall; this variety starts off in its first foliage a warm bronzy red; the heat of summer intensifying its red brilliancy; autumn adding other tints to its richness. The abundant scarlet berries persist throughout winter along the dense network of spiny twigs. A sunny exposure is necessary to bring out and retain its full red color. 18 to 24 inches, 50c. each, \$5.00 dozen.

BARBERRY THUNBERGII (Japanese Barberry)—Attractive whether grown singly or as a hedge. The spray like branches carry great quantities of small green foliage which changes to bright red in the fall. 1 to 1½ feet 20c. each; \$2.00 doz.; 1½ to 2 feet, 30c. each; \$3.00 doz.



Barberry Thunbergii

BUDDLEIA—De France (New). This splendid new Buddleia will be wanted by everyone. Grows into a well-shaped bush 3 to 4 feet tall and carries a mass of brilliant rosy violet-purple, fragrant flower-spikes. 1 year, 50c. each.

BUDDLEIA—Pink Charming—50c. each.

BLUE SPIREA (Caryopteris)—One of our best late blooming shrubs that in the fall is covered with clusters of showy, bright blue flowers. 12 to 18 inches, 25c. each; \$2.50 per dozen; 18 to 24 inches, 35c. each; \$3.50 per dozen.

JAPONICA—Japan Quince or Fire Bush—A very popular shrub which blooms profusely in early spring; flowers bright scarlet; sometimes lighter colors appear. 18 to 24 inches, 35c.; 2 to 3 feet, 50c. each.

VIRBURNUM—OPULUS STERILIS—Common Snowball. Dense and spreading in growth and very attractive while in bloom. Flowers white in large clusters in May and June. 2 to 3 feet, 50c. each; 3 to 4 feet, 75c. each.

CREPE MYRTLE—The best beloved Southern shrub and deservedly so. Hardy in the South, producing clusters of delicately fringed flowers throughout the summer. It is usually grown as a single specimen, but makes a charming hedge. **Pink and Lavender**—1½ to 2 feet, 40c. each; 2 to 3 feet, 50c. **Red**—1½ to 2 feet, 50c.; 2 to 3 feet, 60c.; 3 to 4 feet, 75c. each.



Hydrangea paniculata

hardy, vigorous, adapted to all soils and remarkable for grace, beauty and prodigal bloom. The taller forms are valuable for specimens, low ones for bordering, grouping or planting near the house. Flowering period, May, June.

Deutzia Gracilis—18 to 24 inches, 40c. each; 2 to 3 feet, 50c. each. **Lemoinei**. Snow-white flowers. 18 to 24 inches, 40c. each; 2 to 3 feet, 50c. each.

HYDRANGEAS
Paniculata Grandiflora—Hardy Hydrangea. A most valuable shrub, which produces in July immense panicles of pure white flowers and lasts for several weeks. 2 to 3 ft. 60c. each; \$6.00 per dozen.

Otaska—Old favorite, producing flowers of various shades of color, depending on the acidity of the soil. Usually pink, but sometimes blue flowers. Strong plants, 50c. each; \$5.00 per dozen.

DEUTZIAS—The flowers of the Deutzias are tassel like and clustered into thick wreaths along their drooping branches in June. These shrubs are

FOESYTHIA (Spectabilis)—A most profuse bloomer, with large, rich, golden yellow flowers. 2 to 3 feet, 30c.; 3 to 4 feet, 40c. each.

HYPERICUM (St. John's Wort)—A free flowering shrub, the stems drooping toward the ends as if from the weight of flowers.

Moserianum (Gold Flower)—The golden yellow flowers are borne the entire summer; foliage dark green; grows two feet high. 1 to 1½ feet, 30c.; 1½ to 2 feet, 40c. each.

MOCK ORANGE—Bears its sweetly scented flowers in late May and early June.

Coronarius (Common Mock Orange)—An erect shrub with clusters of pure white flowers in spring. 2 to 3 feet, 35c. each; dozen, \$3.50; 3 to 4 feet, 45c. each; dozen, \$4.80; 4 to 5 feet, 60c. each; dozen, \$6.00.

Grandiflora—May or June. Forms a large, spreading bush, with graceful drooping branches; a strong grower; flowers fragrant. A common and desirable shrub. 2 to 3 feet, 35c. each; dozen, \$3.60; 3 to 4 feet, 45c.; dozen, \$4.80; 4 to 5 feet, 60c. each.

SPIREA—Showy free flowering shrub of real value. Plant in moist soil with a sunny exposure.

Anthony Waterer—Bright with dense crimson flowers in the late summer; a free bloomer; of dwarf growth. 12 to 18 inch 25c. each, \$2.50 per doz.; 1½ to 2 feet 35c. each, \$3.50 per dozen.

Van Houttei—Forms a compact graceful bush with arching branches that are covered from end to end with pure white blooms in May and June. 2 to 3 feet 35c. each, \$3.50 per doz.; 3 to 4 feet 45c. each, \$4.50 per doz.

Thunbergii—A beautiful shrub with numerous slender branches forming a dense, feathery bush 3 to 5 feet high. The pure white flowers, borne in masses, cover the plant like a mantle of snow. 1 to 1½ feet 25c. each, \$2.50 per doz.; 1½ to 2 feet 35c. each, \$3.50 per dozen.

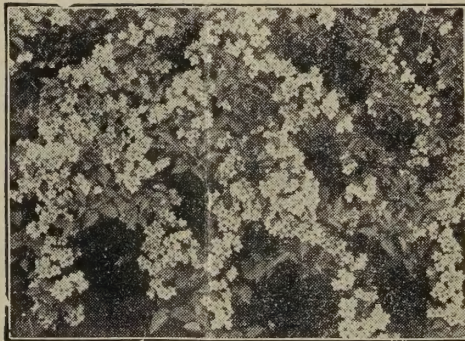
JASMINUM — (NUDIFLORUM (Naked Flowered Jasmine)—Golden yellow flowers before leaves appear in spring. A very hardy, drooping, graceful shrub with dark green foliage. 12 to 18 inches, 25c. each; 18 to 24 inches, 35c. each.

LONICERA—Tartarica (Bush Honeysuckle)—Bears its bright white flowers in May and June, followed by red berries that remain for several weeks. Grows 8 to 10 feet high. 2 to 3 feet, 40c. each; \$4.00 per dozen; 3 to 4 feet, 50c. each; \$5.00 per dozen.

COMMON LILAC—Purple—Both ornamental in the garden and for cutting. One of the most beautiful and fragrant spring flowering shrubs. 1½ to 2 feet, 35c. each; \$3.50 per dozen; 2 to 3 feet, 50c. each; \$5.00 per dozen.

PERSIAN PURPLE LILAC—Medium growing with slender branches and narrow leaves; a choice foundation subject. 2 to 3 feet, 50c. each.

ROSA HUGONIS—One of the best newer shrubs. 2 to 3 ft. Single yellow blooms. 50c. each; \$5.00 dozen.



Weigela

shade. Midsummer. 2 to 3 feet, 50c. each.

KOLKWTZIA—Amabilis (Beautybush)—Beautiful new shrub from China. Has a general resemblance to both Weigela and Honeysuckle, the beautiful trumpet shaped flowers appearing in great profusion during June, in pairs which cluster closely into cymes of about twenty-five. Flowers are bell-shaped and somewhat lipped, pale pink with orange veins in the throat, the buds being much darker. 18 to 24 inches, 50c. each; 2 to 3 feet, 60c. each.



Spirea

WEIGELA—Hardy free flowering shrub producing great masses of bloom in late spring and early summer.

Rosea—A generous bloomer, bearing deep pink flowers; one of the most satisfactory weigelas. 2 to 3 feet, 40c. each; 3 to 4 feet, 50c. each.

Eva Rathke. A charming new Weigela; flowers brilliant crimson; a beautiful, distinct, clear

If To Be Sent By Mail Add 15c. Each to Cover Postage

HARDY ROSES Strong Two-Year-Old Field Grown

MONTHLY OR TEA ROSES

70c. EACH POSTPAID. NOT POSTPAID, 60c. EACH;
\$6.00 PER DOZEN

FRAU KARL DRUSCHKI—The White American Beauty or Snow Queen. An everywhere hardy, vigorous grower, with bright green leaves.

RED RADIANCE—Exactly like Pink Radiance, except the color is clear cerise red.

PRESIDENT HERBERT HOOVER—A glorious new Rose unfolding its broad, thick petals unhurriedly from the beautiful pointed bud. Vivid cerise-pink, softly flamed with yellow, orange and scarlet; this combination most emphatic on the reverse. The perfume is exquisite; the foliage ornamental.

EDITH NELLIE PERKINS HT. (1928.) Large bud; medium-sized flower, double, open, lasting, moderately fragrant outside of petals Oriental red shaded cerise-orange, inside salmon-pink flushed orange, borne singly on very good stem. Good, upright, bushy grower.

MRS. HENRY BOWLES—Ovoid buds and globular flowers of clear piercing pink with lighter shades. Fragrant.

CHAS. K. DOUGLAS—Long pointed crimson-scarlet buds. Foliage freer from disease than most.

PINK RADIANCE—A profuse bearer of large, globular, attractive pink flowers.

ETOILE DE HOLLANDE (H. T.) This rose is comparatively new and its worth has been realized more and more as it has been tried out. It is considered by rose experts to be one of the best red roses on the market today. Flower moderately double, especially attractive when half blown. Its dark red overlaid with almost black velvet shadings is irresistible.

DOUBLE WHITE KILLARNEY—The buds and flowers are beautiful beyond description; many consider it easily the finest white garden rose in cultivation.

CLIMBING ROSES

60c. EACH, POSTPAID. NOT POSTPAID, 50c. EACH;
\$5.00 PER DOZEN

AMERICAN PILLAR—Large single flowers of rich rosy pink, with white center.

AMERICAN BEAUTY (Climbing)—Beautiful large buds opening bright crimson.

DR. VAN FLEET—Pale pink on fine long stems. Beautiful foliage.

PAUL'S SCARLET CLIMBER—Large semi-double flowers, brilliant, scarlet, shaded crimson.

WHITE CHEROKEE—Single flowers; beautiful foliage.

Hardy Perennials and Rock Garden Plants

PRICES ON ALL PERENNIALS (EXCEPT WHERE NOTED): 15c. EACH; \$1.50 DOZEN; \$10.00 PER 100.

In our general list of Hardy Perennials, those marked with a star (*) are especially adapted to Rock Garden planting.

AJUGA—Bugle

Dwarf, creeping perennials. Excellent plants for edging or carpeting bare spots. Suitable for sun or shade.

***REPTANS RUBRA**—Grows 3 to 4 inches high, with deep purplish blue flowers in May and June.

ANTHEMIS KELWAYI

HARDY MARGUERITE—A most satisfactory hardy perennial, bearing all summer daisy-like golden-yellow blossoms; excellent for cutting; 2 feet.

AQUILEGIA—Columbine

These are ideal plants for partially shady borders. Moreover, the flowers are of inestimable value for cutting.

SCOTT ELLIOTT LONG-SPURRED HYBRIDS—Wonderful colors with very long-spurred flowers.

ASTER

HARDY PERENNIAL FLOWERING PURPLE—These hybrids produce flowers of many forms and colors.

BAPTISIA—False-Indigo

AUSTRALIS—Dark blue, pea-shaped flowers in June, are produced on top of spikes 2 feet high; suitable for the hardy border or wild garden. Very attractive foliage all summer.

GAILLARDIA—Blanket Flower

SUN GOD—New pure yellow, large heads and strong stems. 25c. each; \$2.50 per dozen.

GYPSOPHYLLA—Baby's Breath

***PANICULATA**—When in bloom it forms a symmetrical mass 2 to 3 feet in height and as much through, of minute white flowers having a beautiful gauze-like appearance.

HEMEROCALLIS—Day Lilies

Very graceful and stately plants for the waterside, naturalizing in grass, or growing in the partially shaded border.

FLAVA (Lemon Lily)—Good in dry or wet locations or in clumps in front of shrubs. Fragrant lily-like flowers. 3 ft.

KWANSO (Double Orange Lily)—More robust grower than above. Foliage large and handsome. 4 to 5 ft.

DR. REGEL—Handsome, rich orange-yellow flowers in May. Very fragrant. Fine for cutting. 1½ feet.

DUMORTIERI—Orange Day Lily. One of the best. June. 2 ft.

FULVA (Brown Day Lily)—Coppery orange, shaded crimson. 3 feet. July.

THUNBERGI—Much like Flava, but flowers in July, a month later. Spikes 2 to 3 feet tall, and pale yellow blossoms.

DELPHINIUM—Larkspur

BELLADONNA—Blooming from the end of June until cut down by hard frost. The clear turquoise blue of its flowers is not equalled.

BELLAMOSUM—This is a dark blue form of the popular light blue Belladonna, but with intensely rich, deep blue flowers.

HIBISCUS—Mallow Marvels

Very large, showy flowers, 5 to 7 inches across, resembling hollyhocks. These showy flowers are produced all summer long. 4 to 5 feet. Cut-leaf red.

HELIANTHEMUM—Sun Rose or Rock Rose

IRIS SIBIRICA

PERRY'S BLUE—3 to 4 feet. Clear blue flowers on stiff stalks.

LAVANDULA—Lavender

An old fashioned, fragrant, shrubby perennial. Its fragrant flowers are highly valued for drying and preserving.

***VERA**—This is the true Sweet Lavender; grows about 18 inches high; delightfully fragrant blue flowers in July and August.

LINUM—Flax

Elegant, feathery leaved free-flowering, hardy perennials suitable for dry, sunny borders or rock gardens.

***PERENNE** (Blue Flax)—Flowers beautiful pale blue on slender, graceful stems.

HERBACEOUS PEONIES—HARDY

Prices (except where noted): Strong division, 3 to 5 eyes. 35c. each; \$3.50 per doz.

FESTIVA MAXIMA—About the largest and undoubtedly the most popular Peony of them all. High built flowers, long stiff stems, purest white; inner petals slightly tipped carmine.

DUKE OF WELLINGTON—Pure white with sulphur white center.

ISABELLE KARLITSKY—Large, light rose pink.

LOUIS VAN HOUTTE—Bright violaceous red.

NOBILISSIMA—Dark rose.

QUEEN VICTORIA—Pure white; very fine.

PHLOX DECUSSATA—Hardy Phlox

These beautiful hardy border plants are the most effective and useful plants in the garden during the late summer and early fall. Their brilliant colors are loved by all.

INDEPENDENCE—Large; early; white.

R. P. STREUTHERS—Cherry red, suffused salmon.

MIXED PHLOX.

PHYSOSTEGIA—False Dragonhead

VIRGINICA, VIVID—This is a new dwarf variety about 20 inches high, and a great improvement over the first two mentioned. It blooms 3 weeks later than the others, the flowers are a deeper pink; much larger and better, lasting a long time when cut. 20c. each; \$2.00 dozen.

RUBECKIA—Coneflower

NEWMANI—Dwarf Black Eyed Susan—Dark orange yellow flowers, with black centers; valuable for cutting. 2 to 3 ft.

SALVIA—Meadow Sage

AZUREA—A Rocky Mountain species. Grows 3 to 4 feet high, producing, during August and September, pretty sky-blue flowers in the greatest profusion.

FITCHERIANA—Dark blue.

SEDUM—Stonecrop

ACRE (Golden Moss)—Two to three inches. Minute foliage very dense like moss, dark green; flowers similar to leaves, an all-covering golden yellow sheet. May to July. Used for ribboning, carpet bedding, covering graves, and filling between rocks and flagstones.

***STOLONIFERUM**—Most desirable; evergreen leaves; flowers purplish pink. July and August. Excellent for rock garden. Six inches.

VALERIANA—Garden Heliotrope

***COCCINEA**—Showy heads of old rose flowers in umbels on 12-inch stems just above the rich green foliage, are produced from June until October.

STATICE—Sea-Lavender

LATIFOLIA—Excellent for cutting. Makes fine winter bouquet. A mass of small delicate lavender colored flowers.

STOKESIA—Stokes' Aster

CYANEA COERULEA—Beautiful light blue flowers are produced profusely in late summer and early autumn on 18-inch stems; lovely for cutting or in front of the border. Stokesias are one of our late summer-flowering hardy plants.

VERONICA—Speedwell

***AMETHYSTINA "ROYAL BLUE"**—Beautiful spikes of rich Gentian-blue flowers, 10 to 15 inches. June and July flowering.

CLIMBING VINES

AMPELOPSIS VEITCHI—Japanese or Boston Ivy—A deciduous vine of rapid growth, having clusters of blue berries in fall with handsome green foliage assuming charming tints in fall. Perfectly hardy, and the most popular of all climbers. Clings firmly and densely to any hard surface. 2-yr-old plants, 35c. each; \$3.60 per dozen.

CLEMATIS PANICULATA—Japanese Clematis. Flowers white, star-shaped, producing during the summer and fall upon long shoots. Strong plants, 2-year, 25c. each; \$3.60 dozen.

CELASTRUS SCANDENS—Bittersweet. A rapid growing, climbing plant with yellow flowers in June and orange yellow and crimson fruit in the fall. Fruit much used for indoor decoration. Grows in sun or shade. 35c. each; \$3.60 per dozen.

ENGLISH IVY—This popular evergreen vine with medium size dark green leaves is used for covering brick and stone walls and dwellings. Rooted cuttings, 15c. each, \$1.50 per dozen; \$7.50 per 100; 3-inch pot plants, 15c. each, \$1.50 per dozen; \$8.00 per 100.

JASMINE—J—Stephanense. Strong hardy climber with soft pink fragrant flowers. 50c. each.

LONICERA—L. HECKROTTI (Everblooming Honeysuckle.) Flowers rose-colored on the outside, yellow in the center. A most excellent variety. Blooms continuously from early spring till winter. 2-year-old plants, 50c. each.

GRAFTED WISTERIA (Guaranteed to bloom)—**CHINENSIS**—Chinese Wisteria—A very strong grower; it climbs high and twines tightly. Flowers purple in drooping clusters in early spring. 1-year-old plants, 50c. each; \$5.00 per dozen; 2-year old plants, 75c. each.

HEDGE PLANTS

PRIVET—The most popular of all hedges. Set 6 inches apart. **Amoor River**—Almost evergreen in the South. May be trimmed to any desired shape. 1½ to 2 feet, \$5.00 per 100; 2 to 3 feet, \$7.00 per 100.

TREES—FLOWERING AND SHADE

CANNOT BE MAILED

- CHINENSIS** (Japanese Red Bud)—Dwarf, leaves heart-shaped, spring flowering. A rich pink with a purple cast. 2 to 3 ft., 60c. each; 3 to 4 ft., 75c. each; 4 to 5 ft., \$1.25 each.
- CORNUS FLORIDA** (White Flowering Dogwood)—Native of our American forests, this small, upright tree produces a wealth of white blossoms in early spring, followed in the fall by brilliant scarlet fruit. It is very good for use in the shrub border or massed in evergreen plantings. 2 to 3 ft., 50c. each; 3 to 4 ft., 75c. each; 4 to 5 ft., \$1.00 each.
- LOMBARDY POPLAR**—A tall, quick growing tree that branches low. Grows 30 feet or more, but the height can be controlled by cutting back the tops every few years. 4 to 6 feet, 50c. each; \$5.00 per dozen; 6 to 8 feet, 75c. each, \$7.50 per dozen.
- FLORIDA RUBRA** (Red-Flowering Dogwood)—Similar to white-flowering dogwood but flowers have a deep pink color. Produces large quantities of flowers in early spring. The most beautiful of the dogwoods. 2 to 3 ft., \$1.50 each; 3 to 4 ft., \$2.00 each.
- CANADENSIS**—Red Bud or American Judas—A fast growing round-headed tree, with large, leathery, heart-shaped leaves. In spring the branches are covered with reddish-purple flowers before the leaves appear. 2 to 3 ft., 40c. each; 3 to 4 ft., 50c. each; 4 to 5 ft., 75c. each.
- WEeping WILLOW**—A graceful tree, growing to large size, and is especially adapted to moist soil. 4 to 6 feet, 75c. each; 6 to 8 feet, \$1.00 each; 8 to 10 feet, \$1.50 each.
- JAPAN WEeping**—A weeping form worked on 4 to 6 feet stems, the pendulous limbs drooping to the ground. A beautiful object when covered with its rosy masses of blooms in early spring. 2 to 3 feet, \$1.00 each; 3 to 4 feet, \$1.50 each; 4 to 5 feet, \$2.00 each.

STRAWBERRY PLANTS

PRICES, ALL VARIETIES Except Everbearing Variety

Postpaid: 25 plants, 50c.; 50 plants, 75c.; 100 plants, \$1.25; 500 plants, \$4.50.

Not postpaid: 100 plants, \$1.00; 500 plants, \$4.00; 1,000 plants, \$6.00; 5,000 plants, \$5.00 per 1,000.

100 plants of 4 varieties must be ordered at the 25-plant rate. 100 plants of 2 varieties must be ordered at the 50-plant rate.

EARLY VARIETIES

PREMIER—Produces wonderful crops on all types of soil. A good berry for the home garden as well as the commercial grower. The berries are good quality, medium red in color, getting quite dark as they get riper. They have a very attractive green cap and the berries are borne on medium long stems, making them very easy to pick.

BLAKEMORE—A new early shipping berry, developed by the U. S. Department of Agriculture. A very vigorous grower. The berries are somewhat smaller than the Premier and light in color. The eating quality of the fresh fruit is rather tart; an excellent berry for canning and preserving.

MISSIONARY—A very popular variety for the Southern States and does well in almost all soils. The berries are medium in size, dark red in color, rather tart in quality and attractive in appearance.

KLONDIKE—An old and reliable early berry. The fruit ripens evenly all over; they are uniform in shape, medium size, light in color and fine texture, which makes the Klondike a favorite with canners and shippers.

We can also supply **HOWARD, BELMAR, DORSET** and **FAIRFAX**.

MID-SEASON VARIETIES

CATSKILL—The largest and most productive of the mid-season varieties. The berries are light in color with a bright green cap, which makes them very attractive. Quality fully as good as the Premier.

BIG JOE—This variety has been one of the leading mid-season varieties for years. The berries are large in size, very fine quality and have a large, bright green cap, which increases their attractiveness.

We can also supply **SOUTHLAND** and **ABERDEEN**.

LATE VARIETIES

CHESAPEAKE—One of the best late varieties in cultivation and unsurpassed in quality. The berries are very large and hold their size well to the end of the season. They are firm enough to stand shipping to distant markets.

AROMA—A favorite mid-season and late berry. It grows to a large size, is of splendid flavor and very productive. Adapted to either home use or market.

LUPTON—A fancy late berry and one of the best shippers. The fruit is large and firm, regular in size and shape, and the beautiful red color makes them show up well when packed in baskets.

We can also supply **GANDY** and **JOSLIN PRIDE**.

EVERBEARING VARIETY

MASTODON—The most popular and widely grown everbearer. It makes a vigorous growth, the berries are large and of good appearance. The quality is good and it is an excellent berry, either for home garden or for a money crop.

Postpaid, 25 plants 75c.; 50 plants \$1.25; 100 plants \$2.00; 500 plants \$7.50. Not postpaid, 25 plants 60c.; 50 plants \$1.00; 100 plants \$1.75; 500 plants \$7.00; 1,000 plants, \$12.00.

GRAPE VINES

2-year-old, 25c. each; \$2.50 dozen

CACO—Large, delicious, new, red grape. 50c. each.

LUTIE—Of Southern origin, and well adapted to Southern planting; large, brownish red, sweet and sugary. A vigorous grower and very productive; early.

WORDEN—A seedling of Concord and resembles it in vine and fruit but has a larger berry and better quality. Ripens a little ahead of Concord.

CONCORD—Succeeds everywhere; very productive; the bunches large and compact; berries large and black.

NIAGARA—Bunches very large and compact; berries large, light greenish white skin thin but tough; tender and sweet.

RASPBERRIES

All varieties 75c. per dozen; \$5.00 per 100

ST. REGIS—A genuine, practical, profitable, continuous-to-fall bearing red raspberry. Fruit commences to ripen with the earliest and continues on young canes until October. Berries bright crimson, large size, rich, sugary, with full raspberry flavor. Flesh firm and meaty, a good shipper. Wonderfully prolific. Canes stocky, of strong growth, with abundance of dark green feathery foliage.

ELMS: Ulmus

AMERICANA—(American Elm)—A native tree of rapid and stately growth; branches long and graceful. Very extensively planted. 6 to 8 ft., \$1.00 each; 8 to 10 ft., \$1.50 each.

FLOWERING PEACH (Double Red—Double White)—A beautiful small tree rarely over 20 feet tall; at its blossoming time in May every twig and branch is covered with bright and beautifully formed flowers. 2 to 3 ft., 50c.; 3 to 4 ft., 75c.; 4 to 5 ft., \$1.00 each.

NORWAY MAPLE—A very popular shade tree. Vigorous grower, foliage dark shining green. 6 to 8 feet, \$1.25; 8 to 10 feet, \$1.75 each; 10 to 12 ft., \$2.50 each.

SUGAR MAPLE—A splendid hardy ornamental tree. Foliage turning bright orange, sometimes scarlet in autumn. 6 to 8 ft., \$1.25; 8 to 10 ft., \$1.75 each; 10 to 12 ft., \$2.50 each.

PIN OAK (Q. Palustris)—It is the most popular of all Oaks. Foliage is deep shining green in autumn, fading to a brilliant scarlet. For street and avenue planting it has no superior. 6 to 8 ft., \$1.50 each; 8 to 10 ft., \$2.00 each; 10 to 12 ft., \$2.50 each.

NEW CHINESE ELM—Ulmus Fumila. Although hard wooded, this elm makes a most rapid growth. They have been known to put on 5 to 6 feet of growth in one year. Absolutely hardy, succeeding in any soil. Similar to American elm in habit of growth, but leaves are smaller. 4 to 6 feet, \$1.00 each; 6 to 8 feet, \$1.50 each; 8 to 10 feet, \$2.00 each.

SCARLET or RED MAPLE—A large tree with spreading branches. The earliest Maple to bloom, its beautiful red flowers appearing in late winter. In the fall its leaves turn to the most brilliant shades of red and scarlet. 18 to 24 inches, \$1.50 each; 2 to 3 feet, \$2.50 each.

FRUIT TREES CANNOT BE MAILED

APPLES 4 to 6 feet, 50c. each; \$5.00 dozen; \$35.00 per 100

The varieties offered below are some of the best known and proven sorts. Clay or clay loam is the best soil for growing apples. The land should be plowed well and deep before setting the trees; should be well drained and kept thoroughly cultivated.

SUMMER APPLES

EARLY HARVEST—Medium to large, bright yellow, tender, juicy, well flavored. Ripens early June; lasts 2 or 3 weeks.

RED ASTRACHAN—Large; yellow, nearly covered with crimson, and fine bloom; juicy, crisp, acid; a beautiful fruit. Tree a thrifty and fine grower; excellent and profitable. June.

PERKINS—Fine eating sort; light yellow; tender. White flesh; mild acid.

WINTER APPLES

DELICIOUS—Medium to large; roundish, skin dark red with yellow background. A heavy bearer and good keeper; extra fine.

SHEEP NOSE—Fruit large at base, tapering to apex; brown russet red; tender and fine. August.

FALL CHEESE—Large green striped with red, flesh white. Subacid flavor with rich aroma.

YELLOW DELICIOUS—A very fine apple, similar to the Delicious in flavor and time of ripening.

MAMMOTH BLACK TWIG—A seedling of Winesap; fruit darker red and larger size; strong, upright grower; fine flavor. One of the best Winter apples.

WINESAP—The old-fashioned Winesap. No better apple to be had; needs no description.

STAYMAN'S WINESAP—Also a seedling of Winesap; dark red, firm flesh, fine grained, crisp, subacid; strong grower.

CHERRIES 4 to 6 ft. trees \$1.00 each

SWEET CHERRIES

BLACK TARTARIAN—Late, large, purplish black; tender, juicy, sweet. July.

ROYAL ANN—Large, light yellow and red, known as Wax Cherry. June.

SOUR CHERRIES

LARGE MONTMORENCY—Largest and strongest grower of all sour cherries. Ripens after Richmond. A leading market sort.

PEACHES

A well-drained, sandy loam with a clay sub-soil is an ideal soil for the peach; however, the peach has the faculty of adapting itself to almost any soil, provided it is well drained.

3 to 4 ft., 40c. each; \$4.00 per doz.; \$20.00 per 100; 4 to 5 ft., 50c. each; \$5.00 per doz.; \$25.00 per 100

BELLE OF GEORGIA—Very large, skin white with red cheek; flesh white, firm and of excellent flavor. Tree rapid grower, very prolific, fine shipper. July.

CARMAN—Large; resembles Elberta in shape; color, creamy white or pale yellow with deep blush; skin very tough, flesh tender, fine flavor and quite juicy. Last of June.

ELBERTA—Large yellow, with red cheek; juicy and of good flavor; flesh yellow. An excellent shipping variety. August.

GOLDEN JUBILEE—A high quality, early, yellow, freestone peach. The value of this peach to the Eastern and Southern grower cannot be estimated. A typical Elberta type fruit, highly colored, ripening before Carman or about four weeks before the regular Elberta. 3 to 4 ft., 50c.; 4 to 6 ft., 60c.

HILEY—Ripens about a week before the Belle of Georgia, also a seedling of the Belle. Tree very hardy; a large creamy white peach with rich blush on sunny side. Freestone.

MAYFLOWER—Early Wonder—Originated in North Carolina. An excellent variety. Fruit small to medium; round, entirely covered with red. Blooms late, very hardy; bears early, ripens ahead of any other variety. May 15th to June 1st.

SMOCK FREE—Large, yellow and red, bright yellow flesh. Valuable for market. Late September.

RED BIRD (Early Wheeler)—Cling, earliness, high color and good quality makes it very valuable. Very large. Creamy white overspread with a bright, glowing red. Good shipper.

J. H. HALE—One of the best sorts for market or garden. Fruit is very large, round; quality excellent. Skin yellow, finely colored; flesh yellow, sweet and melting. Ripens just before the Elberta. A very good one.

HEATH CLING—Ripens about September 10th to 15th. An old variety of cling peach; has never been excelled by any other of its class. Fruit extra large roundish; flesh white, exceedingly juicy.

CHAMPION—Very large, sweet, rich and juicy, creamy white with red cheek; very hardy. Last of July.

PLUMS 4 to 6 ft., 75c. each; \$7.50 dozen

ABUNDANCE—Botan. One of the oldest and best known Japanese varieties; hardy, productive. Lewon yellow. August.

RED JUNE—Ripens first of August, fruit large, flesh light yellow, half cling; slightly subacid and of good quality. Very

SHIRO—Rich golden fruit, similar in size and texture to Burbank. Highly recommended for home orchard.

PEARS

3 to 4 feet trees, 45c. each, \$4.50 per dozen

4 to 6 feet trees, 60c. each, \$6.00 per dozen

BARTLETT—Large yellow, most popular. August.

KIEFFER—Large, skin yellow with a light vermilion cheek; flesh brittle; very juicy, good quality. Begins to bear at 3 to 4 years old. One of the surest bearers.